

This Project was made possible thanks to a grant from the ISEAL Innovations Fund, which is supported by:



Schweizerische Eidgenossenschaft
Confédération suisse
Confederazione Svizzera
Confederaziun svizra

Swiss Confederation

Federal Department of Economic Affairs,
Education and Research EAER
State Secretariat for Economic Affairs SECO



Expansion of Blueprint Sustainability Assessment to Build a Common Territorial Agenda

Final report



April 2024

Contents

- Summary of project objectives 3
- Project deliverables..... 3
- Results 3
 - Community activities: El Guineo & El Osito 3
 - Multi-stakeholder Forum 9
- Lessons learned 13
 - Testimonies from Community Representatives 13
 - Blueprint optimization 18
- Project outcomes and their indicators 19
- Conclusions 21
 - Next steps for Swisscontact 21
 - Blueprint and SAN's programs..... 21
- Publications about the project 22

Summary of project objectives

- Provide technical assistance to Swisscontact to adopt social accountability processes into the Paisajes + Sostenibles project using the next iteration of Blueprint landscape assessment tools.
- Through the application of the Blueprint tools, implement participatory action research methods and democratization of data to build a Common Territorial Agenda (CTA) with local stakeholders that support deforestation-free and climate friendly supply chains in Colombia's cocoa-dominated Apartadó Municipality (Antioquia Department).
- Replicate and improve Blueprint tools to systematize the collection and exchange of perspectives on the interaction between land uses, ecosystems, and human dimensions.
- Enable SwissContact to continue codesigning activities with local stakeholders that reinforce their strengths to address local land-use planning and management that are consistent with the priorities of the Paisajes + Sostenibles.

Project deliverables

1. GIS mapping of Apartadó to understand the spatial and climatic analysis and climate change projections for the region;
2. Situational report using field observations, primary data and secondary data; and
3. Actionable strategies that align with the main goals of Paisajes + Sostenibles and provide the basis for a Common Territorial Agenda.

Results

Community activities: El Guineo & El Osito

Through a series of meetings and focus group workshops, participatory facilitation and assessment methods were applied that gained the full support and respect of the community members and helped them organize their thoughts within the Flora & Flora community capital framework.

Relationship building and stakeholder mapping

SAN's local partner organizations Swisscontact and Equiori, had mapped the relevant stakeholders for their Paisaje+Sostenible program. Equiori has been leading the relation with the local cocoa smallholder associations and Community Action Boards (JACs) of each village.

Swisscontact and Equiori representatives also shared the project objectives with the local stakeholders in December 2023 and received the first impression of cocoa smallholders about the situation of their villages.

Situational Assessment

In January 2024, two focus group workshops were conducted by SAN, Swisscontact and Equiori, based on the 15 questions of the SAN indicator catalogue:

1. Are the elders (older people) in the community consulted to resolve situations that affect the communities?
2. How does the harsh rainy season affect your productive activities?
3. How have droughts affected your productive activities?
4. What type of organizations do you know in the neighborhood and the municipality?
5. Which of these organizations do you participate in?
6. Which of these organizations would you be interested in participating in?
7. Which International Cooperation projects do you remember?
8. What is the existing infrastructure on the sidewalk?
9. How often is road maintenance done?
10. Who does that maintenance?
11. How do you receive information?
12. What types of differences usually occur between neighbors?
13. How are the differences and inconveniences that arise in the territory resolved?
14. What differences usually arise with other people who are not neighbors? (transport, merchants, teachers, other types of people)
15. How do they make decisions at the village level?

The participation was as follows:

- El Osito (January 23, 2024): 11 in total (6 women (54.5%), 5 men)
- El Guineo (January 25, 2024): 25 in total (12 women (48%), 13 men)

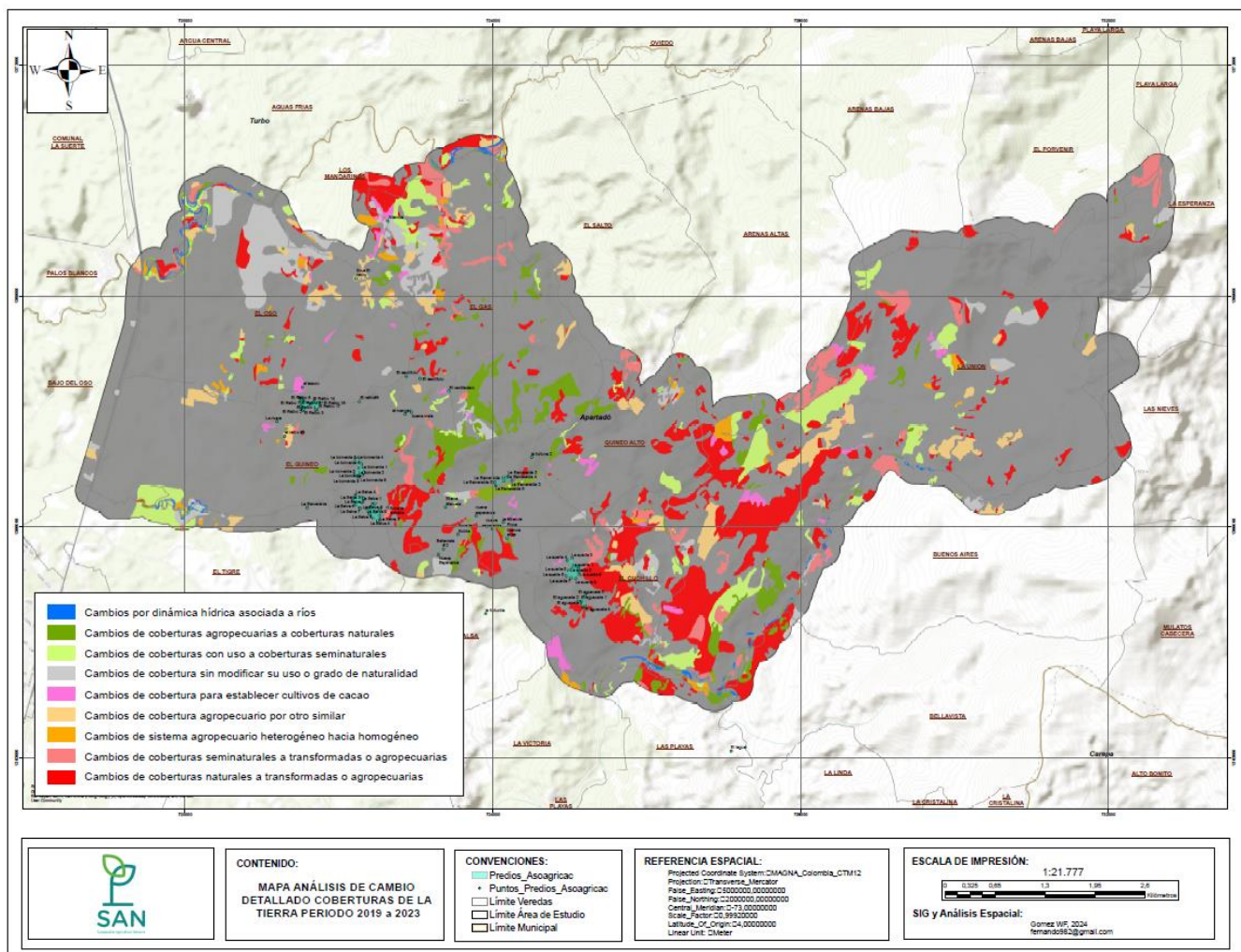
SAN Local Expert (Julián) also conducted 10 farm visits in total – with Angie Quintero (Swisscontact) and Mario Cardona (Equiori) as observers and trainees - applying the Cocoa Adoption Observations for Colombia: 10 producers in total (6 women, 4 men).

Democratization

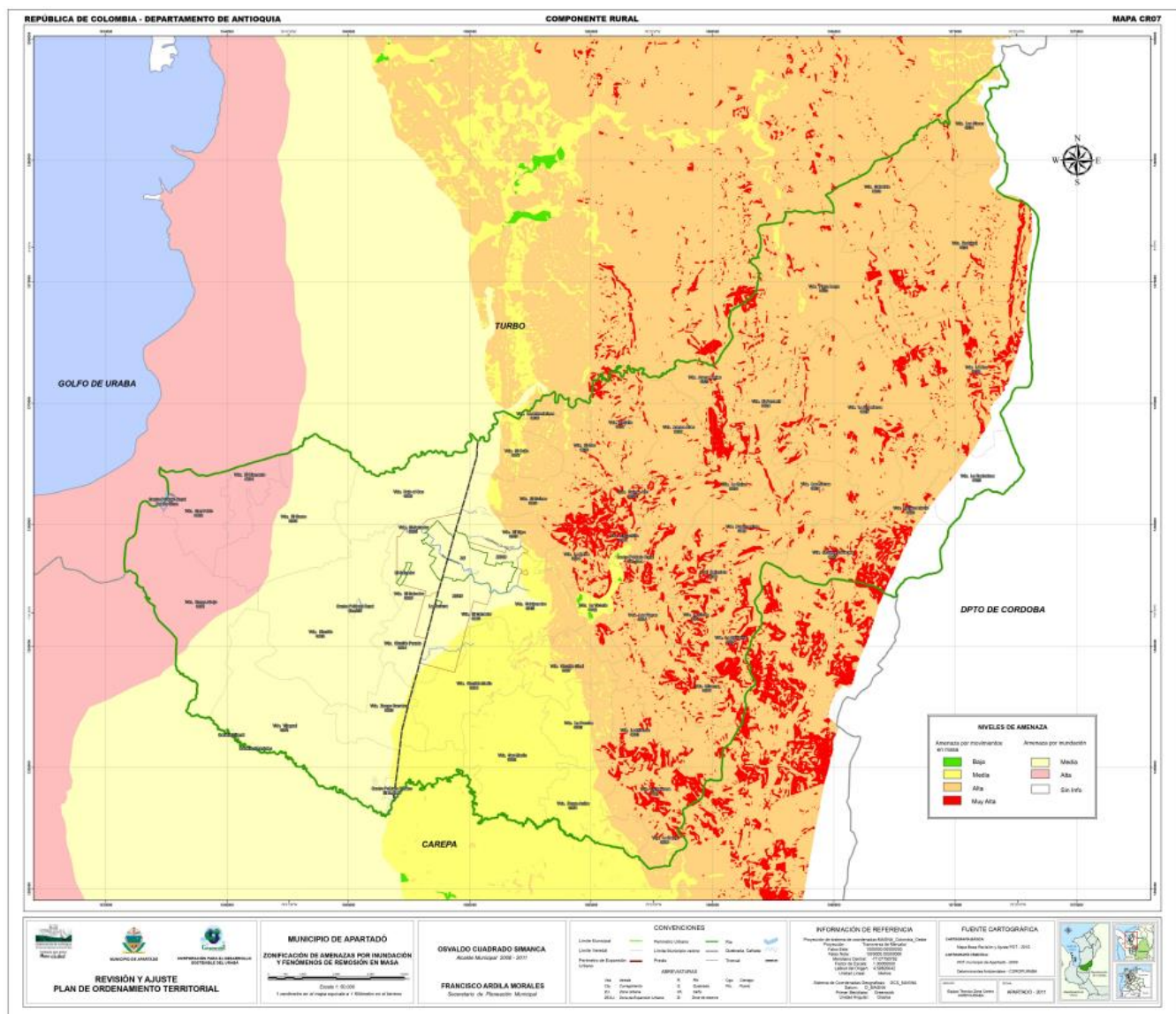
In February, 2024, SAN, Swisscontact and Equiori presented the main findings of the situational assessment to the village representatives of El Osito and El Guineo.

The following paragraphs summarize the facts from the situational assessment that most resonated in the community members during the village focus group discussions significant findings of the three situational assessment elements Adoption Observations, GIS analysis and secondary data; and the respective feedback received from:

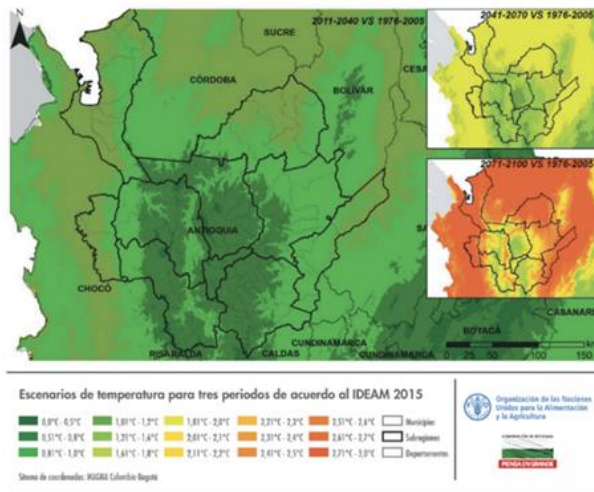
- The high dynamic in terms of land use changes between 2019 and 2023. In four years only, almost 25% of the study area changed its land use. Natural ecosystems (including secondary growth) were converted to crops or pastureland because landowners have been retaking their agriculture activities after the peace agreement. On the other hand, not all land use changes have impacted negatively on natural ecosystem coverage. Some former agriculture or cattle production systems have been abandoned and this in turn has triggered ecosystem recovery resulting in natural or semi-natural areas.



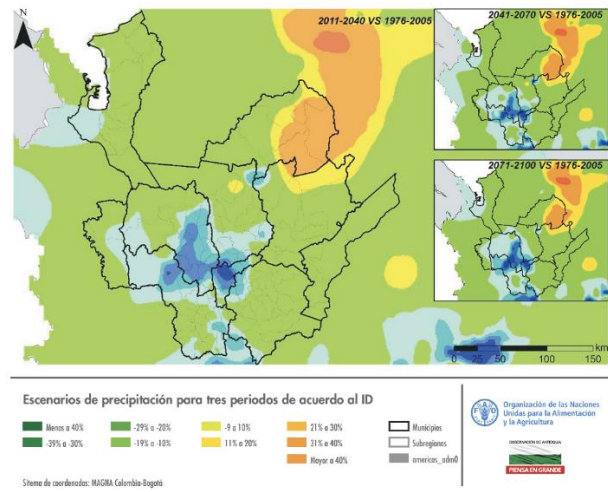
- Village members were not aware of the official government *PDET or POMCA (watershed management) environmental zoning maps* that indicate that the study area should be mostly subject to preservation, protection, recovery, or sustainable production / use activities due to their slopes, soil type or rich water resources. Community representatives were also driven to the *flood or landslide risk maps* indicating medium or high risks for their territory. There are frequent observations that garbage and cut trees block the water flow of rivers or streams. During the discussion of these maps, local stakeholders highlighted the need of sustainable land management by everyone through soil conservation, agroforestry, and reforestation activities. The planting of trees was emphasized as a key activity to maintain the region resilient in view of climate change. Glyphosate use was blamed by smallholders for increased soil erosion.



- Climate predictions for a significant temperature increase (3-4 °C up to 2100) additionally impressed the village focus group members who felt that temperatures are already considerably high. The risk of reduced precipitation (up to 10% less) also caused concern in terms of the viability of future agriculture activities, in particular cocoa production. In recent years, participating cocoa producers have observed more extreme rainfall events that reduce cocoa tree production due to increased humidity and consequent fungus attacks (*Monilia* sp. and *Phytophthora* sp.).

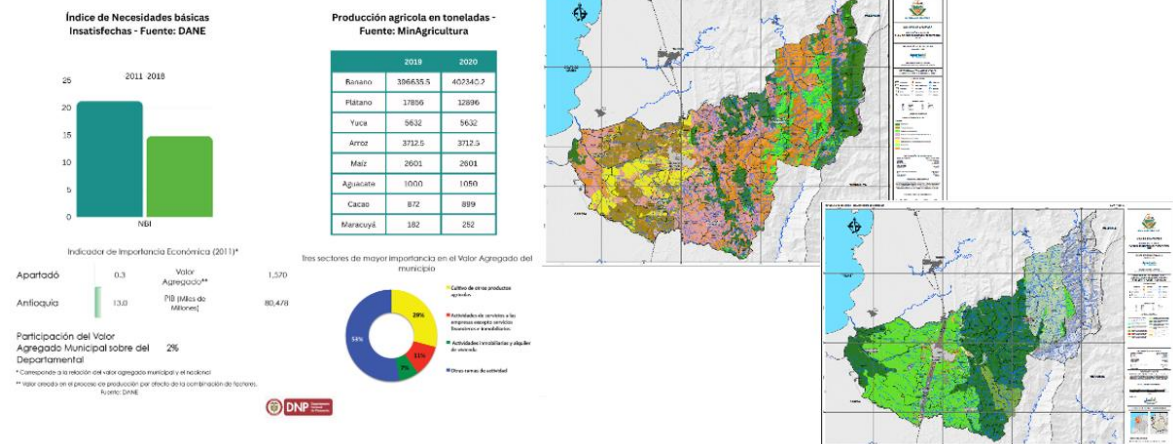


Temperature predictions



Rainfall predictions

- According to official secondary data, the municipality of Apartadó contributes 2% of the production process value of the Antioquia department through highly diversified economic activities including agriculture and cattle production systems (29%), services (11%), real estate/renting (7%), and other (53%). Within agriculture production, the crops with the highest production volume are bananas, followed by plantains, cassava, rice, maize, avocado, cocoa, and passionfruit. Village representatives highlighted the fast increase of avocado and passion fruit production areas in their territories. Although the index of unsatisfied basic needs according to DANE (Colombian National Statistics Bureau) decreased by more than 10% from 2011 to 2018, village representatives confirmed that there is no drinking water accessible in none of the two villages *El Guineo* and *El Osito*. And while at *El Osito*, internet service (cellphone signal) is good, the health station is lacking a nurse.



- The main results of the cocoa smallholding visits and structured dialogue with the producers (*cocoa adoption observations*) were: the deficient genetic material of cocoa tree seedlings produced by local nurseries (bad plant nursery timing results in weak cocoa tree root systems), the need to improve soil conservation practices on slopes and apply fertilizer (very expensive though) that is custom-made for cocoa trees to be able to significantly increase their productivity; and the challenge to conserve or restore riparian areas within cocoa farms.



Creating the basis for the Common Territorial Agenda of Swisscontact's Paisajes +Sostenibles Program

During these February 2024 village focus groups, the January Community Capital Flowers exercise was also strengthened and formed the basis of discussion for the first multi-stakeholder forum.



Multi-stakeholder Forum

The multi-stakeholder forum organized by Swisscontact in collaboration with Equiori and SAN, discussed the situational assessment, voted on the actionable strategies organized within the Community Capital Framework, and backed up the refinement of the Action Plan for the Swisscontact program Paisaje +Sostenible.

Relationship building and stakeholder mapping

SAN's local partner organizations Swisscontact and Equiori, had mapped the relevant stakeholders for their Paisaje+Sostenible program. Swisscontact led the relationship building with the following local partner organizations that participated – together with the Community Action Board presidents and cocoa association leaders in the two multistakeholder fora:

- Alcaldía de Apartadó (Municipality), Cámara de Comercio de Urabá (CCU = Urabá Chamber of Commerce), Corporación de turismo de Urabá (tourism corporation), CRIIE Urabá (Centro Regional de Investigación, Innovación y Emprendimiento = Regional

Centre for Investigation, Innovation and Entrepreneurship) and Y AJÁ URABÁ Magazine (invited to report on the outcomes of the final multi-stakeholder forum).

Democratization of the Situational Assessment Results

The February 2024 multi-stakeholder forum met at the Urabá chamber of commerce office to listen to a summary of the situational assessment results presented by SAN, Equiori and Swisscontact and voted on the most actionable strategies originally proposed by the village focus groups.

In general, the institutional representatives backed up the opinions from the villages. Additional comments included:

- The economic development of the municipality is stagnant and archaic.
- The total cocoa production area in the municipality is 2056 hectares.
- The financial formation of smallholders is very important.
- Cocoa producers have received the best training events from private experts.
- Agrotourims is a future option, but the mountain areas are not visited because of the prejudice of being insecure areas.
- New channels of commerce need to be opened and more value added through cocoa processing is also important.

Creating the basis for the Common Territorial Agenda of Swisscontact's Paisajes +Sostenibles Program

On April 11, 2024, at the Urabá Chamber of Commerce a workshop was held with 16 stakeholders from the local institutions (see *Relationship building and stakeholder mapping* section):

The participants agreed on the following actions proposed by Swisscontact and based on the results of the SAN activities with Equiori and Swisscontact within the framework of the "Expansion of Blueprint Sustainability Assessment to Build a Common Territorial Agenda" project.

The vision of Swisscontact's Paisaje +Sostenible program is to

Improve the livelihoods and well-being of rural families in Antioquia by creating sustainable supply landscapes with deforestation-free and climate-friendly supply chains for present and future generations.

The actionable strategies for the Paisaje +Sostenible program's action plan, agreed by the participants of the workshop and matching with the Blueprint replication grant activities are the following:

1. Strengthening governance and social network

- a. Creation of a Governance Mechanism
 - i. Establishment of a strategic table that involves key actors for robust institutional support in the implementation of sustainable landscapes.
- b. Organizational strengthening of associations
 - i. Mapping of potential leaders: promoting the inclusion of young people and women.
 - ii. Capacity development: leadership training programs, advice on organizational structure, sustainable agricultural practices and business management (focus on access to differentiated markets and certifications)
- c. Strengthening the social structure
 - i. Infrastructure improvement: Projects to improve the infrastructure of rural schools and convert them into education centers with sustainable practices.
 - ii. Community Integration: Promotion of social cohesion through sports and musical activities, encouraging teamwork and interaction.

2. Basic Participatory Landscape Monitoring Systems

- a. Digital monitoring platform and its respective maintenance
- b. Exchange and mentoring programs: establish exchange and mentoring programs with successful associations and experts in the cocoa sector.

3. Adoption of Income Diversification Measures and Improvement of Productivity and Quality

- a. Awareness raising on Gender Equality and Social Inclusion & Leadership training for Women and Youth
 - i. Identification of leaders: Collaborate with organizations to identify women and young leaders.
 - ii. Training programs: Modules on empowerment, rights, leadership styles and participation.
 - iii. Awareness campaigns: Focused on GESI, rights of access to resources and gender equality.
- b. Collaboration and Promotion: Joint work with key actors to improve equitable access to resources.
- c. Monitoring and Evaluation: Implement systems to evaluate the impact and participation in decision-making.

4. Income Diversification with Special Attention to Opportunities for Women and Youth

- a. Tourism and Circular Economy: Development of sustainable tourism and waste management workshops.

- b. Entrepreneurship: Support for women and youth initiatives, including the use of cocoa by-products.
- c. Infrastructure Improvement: Initiatives to support rural tourism and accessibility to markets.

5. Consolidation and Validation of the Sustainable Supply Panorama

- a. Specialized Training: Training in cocoa and sustainable agricultural practices to diversify income.

6. Implementation of Regenerative and Climate Smart Agricultural Practices



- a. Postharvest Advisory Services and Technologies
 - i. Innovation and Quality: Support from Swiss experts in sustainable processing.
 - ii. Territorial Collaboration: Coordination with local actors for workshops and training in sustainable practices.
 - iii. Educational Connection: Articulation with institutions to expand knowledge in post-harvest processes.
 - iv. Mapping and Georeferencing: Use of satellite technology to identify areas for PES (Environmental Services Payments), closing technological gaps and promoting youth inclusion.
- b. Training in Agroforestry and Regenerative Agriculture
 - i. Organizational Support: Providing resources to producers in CSA and regenerative agriculture.
 - ii. Schools as learning centers for sustainable agriculture: complement education with demonstration plots, plant material and family environmental education.
 - iii. Bioinputs, nurseries, and micro-watersheds project led by youth: Production and sale of native trees and bioinputs, supporting reforestation, protection of micro-watersheds, sustainable agriculture, and food security.
- c. Access to Payments for Ecosystem Services and Carbon Credits
 - i. Legal support: Help in legalizing properties for access to carbon credits.
 - ii. Traceability: Support to comply with zero deforestation regulations.



Lessons learned

All participatory action research methods used during the project were taken up positively by the community members and representatives from the local institutions. The following testimonies from the El Guineo y El Osito villages speak for themselves.

Testimonies from Community Representatives

The SAN Colombia project coordinator Julián Gómez collected testimonies from community representatives about their impressions of the process (what they liked about the process and what could be improved):

Interviewee	Quote (Español / English)
El Guineo village	
<p>Emilia Isabel Páramo</p> 	<p><i>La metodología que nos trajeron acá fue muy buena. Me gusta mucho porque nos hablan todo sobre la parte de cuidado del ambiente. Va muy enfocado en todo lo que tiene que ver con la familia, entonces me parece muy, muy bueno y que nos traigan puestos proyectos a la vereda es super excelente.</i></p> <p>The methodology applied here was very good. I really like it because they tell us everything about caring for the environment. It is very focused on everything that has to do with the family, so I think it is very, very good and that they bring projects to the village is super excellent.</p>
<p>Rodrigo Pérez, ASOCIRA cocoa association</p> 	<p><i>Es muy importante para nosotros el acompañamiento que estamos teniendo por parte del programa paisajes sostenibles, pues nos permite a nosotros mirar todo el potencial que hay en la zona. Todo el tema de paisajes, de bosques y también el tema de necesidades. Cómo implementar el establecimiento de cultivos que ayuden a preservar el medio ambiente y también la importancia de las necesidades de cada comunidad, de los colegios, de las vías. Y de digamos del internet, como esas plataformas también nos pueden servir de apoyo para el tema de aprovechamiento.</i></p> <p>The support we are receiving from the sustainable landscapes program is very important to us, as it allows us to see all the potential that exists in the area. The whole theme of landscapes, forests, and the theme of basic needs. How to establish the crops that help preserve the environment and the importance of the basic needs of each community, of schools, of roads. And the Internet: how these platforms can also serve as support for the issue of use.</p>

Interviewee	Quote (Español / English)
<p>Yolanda Cartagena</p> 	<p><i>El proceso me pareció muy interesante, pues porque nunca nos habían venido a visitar, a hacernos, pues tantas cosas que me explicaban y para uno tener como conocimiento de todas esas cosas muy importantes. ¿Y, qué le mejoraría Yolanda? No, está muy claro, todo muy bien.</i></p> <p>I found the process very interesting, because we have never been visited or asked. You explained so many things to me and to have knowledge, all those very important things. And what would you improve, Yolanda? No, it's very clear, everything is very good.</p>
El Osito village	
<p>Miguel Baos</p> 	<p><i>Soy integrante también de la tercera edad. Soy sociólogo pensionado. Vivo en la vereda y soy cultivador de plátano y de cacao. La oportunidad de asistir a estas charlas que nos han regalado, que nos han brindado para hacer una agenda de las necesidades básicas prioritarias de nuestra comunidad donde pudimos socializar con profesionales de mucha capacidad y de mucho conocimiento que nos orientaron, que nos guiaron, que nos trajeron documentales de material bibliográfico, conocimientos y nos guiaron para nosotros poder sacar una agenda con lo que verdaderamente consideramos que son nuestras necesidades más prioritarias para el desarrollo y el bienestar de todos aquí en la comunidad. Estamos muy agradecidos y queremos sacarle el máximo provecho todos estos conocimientos y todos estos análisis a los cuales hemos llegado. Infinitas gracias.</i></p> <p>I am also a member of the elderly. I am a retired sociologist. I live in the village and I am a banana and cocoa farmer. The opportunity to attend these talks to make an agenda of the priority basic needs of our community where we were able to socialize with highly capable and knowledgeable professionals who guided us, who brought documentaries of bibliographic material, knowledge and guided us so that we could draw up an agenda with what we truly considered to be our most priority needs for the development and well-being of everyone here in the community. We are very grateful, and we want to make the most of all this knowledge and all this analysis. Thank you so much.</p>
<p>Sandra Milena Borja Guzmán, vice-president of the Community Action Board</p>	<p><i>Soy una gran productora, una campesina que le pongo el corazón a lo que hacemos. Agradecerle de antemano a Dios por traer a cada uno de los funcionarios que nos han enseñado y nos han guiado. Para que nosotros por fin alguien nos escuche a nivel nacional, departamental, municipal. Para socializar con estas personas las necesidades más prioritarias que tenemos en nuestra comunidad de El Osito. La verdad que no tengo palabras, sino de agradecimiento por todas las enseñanzas que nos han dejado, porque ya sabemos que debemos de cuidar nuestro medio ambiente. Debemos de organizarnos como asociaciones también para poder que estos recursos que lleguen a nuestras comunidades, cuidar las cuencas hídricas, porque al paso que las llevamos las vamos destruyendo nosotros mismos. Con el mapeo que hicimos el día de hoy, la verdad es algo supremamente maravilloso, muy constructivo</i></p>

Interviewee	Quote (Español / English)
	<p><i>para nuestra comunidad. ¿Para nuestros campesinos, porque sabemos de qué la mano de todas estas personas que nos van a aportar su grano de oro, no? En acompañarnos, en motivarnos. Y en sensibilizar todas estas comunidades que estamos en este grupo, la verdad que eso nos deja una enseñanza grandísima. Sabemos que no podemos talar los árboles porque tenemos de un área también en zona roja que se pueden deslizar porque este material de por acá, pues es muy deslizador. Nosotros mismos tenemos nosotros aquí cómo formar nuestras propias empresas comunitarias. La verdad que sí esperamos todos, pues las capacitaciones y organizarnos y tener ese apoyo mutuamente. Muchísimas gracias.</i></p> <p>I am a great producer, a farmer who puts my heart into what I do. Thank God in advance for bringing each of the officials who have taught us and guided us. So that we finally have someone listen to us at the national, departmental, municipal level. Socializing with these people the most priority needs that we have in our community. The truth is that I have no words other than gratitude for all the lessons they have left us, because we already know that we must take care of our environment. We must also organize ourselves as associations to ensure that these resources reach our communities, taking care of the water basins, because at the rate at which we carry them we are destroying ourselves. With the mapping we did today, the truth is something supremely wonderful, very constructive for our community. For our farmers, because we know what the hand of all these people who are going to contribute their grain of gold to us, right? In accompanying us, in motivating us. And in raising awareness among all these communities that are in this group, the truth is that this leaves us with a great lesson. We know that we cannot cut down the trees because we have an area also in the red zone that can slide because this material around here is very slippery. We ourselves have here how to form our own community companies. The truth is that we all hope for the training and organizing ourselves and having that mutual support. Thanks a lot.</p>
<p>Doris Morales, president of the Community Action Board</p> 	<p><i>Muy contenta, porque tuvimos la oportunidad de tener esa gran alianza de estas entidades para venir a brindar la oportunidad de unificar a la comunidad en donde expresará todas sus necesidades en donde la metodología implementada ha sido totalmente maravillosa porque nos permite evidenciar y visualizar todas esas necesidades que tenemos en nuestra comunidad, en donde focalizamos cuáles son las más importantes en donde también nos permite visualizar lo importante que es tener muy en cuenta a nuestra naturaleza. Entonces en base también a esto, pues la idea es seguir trabajando, articulado con todas estas entidades. También hago parte de la asociación agrícola ASOAGRICAG. El estar dentro de estas organizaciones me ha permitido como líder social interactuar con las diferentes entidades. Y me gusta mucho cuando digamos, hablamos de nuestra naturaleza. El cuidado con nuestra madre tierra porque ese ha sido uno de los aspectos que más bien dentro de las culturas que se ha acabado mucho. Entonces la idea es nuevamente reconstruir, transformar y mirar en lo posible como las nuevas generaciones podemos más bien hacer ese cambio, ese chip de que debemos de cuidar todos nuestros recursos naturales, cuidar nuestra madre tierra porque es que este es el pulmón de nosotros. Porque sin ella, pues lógicamente no existimos.</i></p> <p>Very happy, because we had the opportunity to have this great alliance of these entities to come and provide the opportunity to unify the community where they</p>

Interviewee	Quote (Español / English)
	will express all their needs where the methodology implemented has been totally wonderful because it allows us to demonstrate and visualize all those needs, that we have in our community. We focus on which are the most important and it also allows us to visualize how important it is to take our nature into account. So based also on this, the idea is to continue working, articulated with all these entities. I am also part of the agricultural association ASOAGRICAG. Being within these organizations has allowed me as a social leader to interact with different entities. And I really like it when we talk about our nature. Caring for our mother earth because that has been one of the aspects that has been largely over within cultures. So, the idea is again to rebuild, transform and look as far as possible at how the new generations can make that change, that chip that we must take care of all our natural resources, take care of our mother Earth because this is our lungs. Because without it, logically we do not exist.

Swisscontact - the partner organization benefitting from SAN assistance

Swisscontact rapidly embraced and actively engaged in the landscape diagnostics and local stakeholder engagement activities led by SAN. Swisscontact Paisaje+Sostenible program technicians and Equiori's technical representatives have understood the value of the participatory exercises with the cocoa village representatives and have also appreciated the results of the technical reports on land use change analysis and the assessment of the secondary data for the Apartadó municipality.

As a result of the good work and the robustness of the SAN methodology, Swisscontact expressed interest to SAN to keep collaborating within its program effort in Magdalena Medio (Antioquia region) for the following production systems: cattle, cocoa, forest products, oil palm and artisanal gold mining.

Equiori – the chocolate company that engages with the local cocoa smallholders and buys their cocoa – has also expressed its appreciation for the provided information and methodology that nurtures its corporate sustainability strategy.

On April 8, 2024, Julián Gómez met with the Swisscontact Paisaje +Sostenible program team (Sara Galeano (Project Coordinator, Sustainable Landscapes Initiative), Melissa Patiño (Landscape Governance and Evaluation Facilitator) and Angie Quintero (Monitoring and Results Measurement (MRM) Manager)) to discuss progress so far and upcoming activities. The following table summarizes some of the most important quotes about the Swisscontact team's view about the lessons learned during the SAN Blueprint replication process:

Original quotes in Spanish	English translation
<ul style="list-style-type: none"> La metodología, me parecía muy buena y también muy acertada en muchas cosas, pues ya lo ambiental creo que podemos hacerlo como la parte social y adversa a las cosas ambientales y económica. 	<ul style="list-style-type: none"> The methodology seemed very good to me and very accurate in many things, because I think we can do the environmental part as well as the social part and adverse to environmental and economic things.

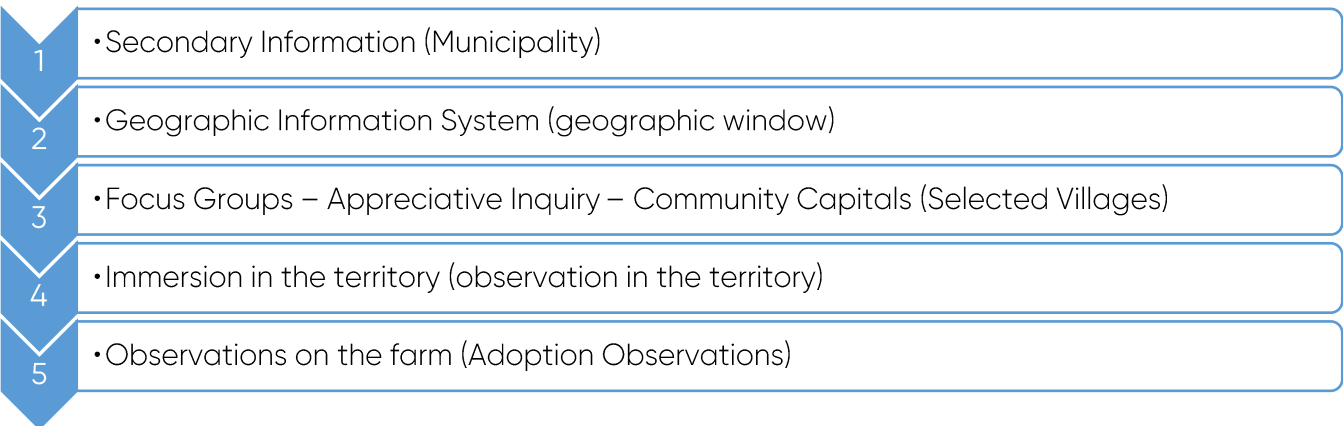
Original quotes in Spanish	English translation
<ul style="list-style-type: none"> • <i>Está súper alineado con lo que vimos el año pasado, con lo que hemos hablado con las entidades, y la comunidad es muy receptiva.</i> • <i>La metodología lleva también esa conciencia sobre lo que necesitan en realidad lo que tienen que priorizar.</i> • <i>También me gustó esa parte que les mostramos de los datos secundarios donde ellos veían cómo desde afuera ven a su vereda y porque llegan o no llegan las ayudas.</i> • <i>Eso de la metodología me pareció súper chévere: Que la gente, no sé si era esta comunidad en específico o si es la actividad que conduce a esto, empieza a reconocer estos factores.</i> • <i>Lo de sistemas de información geográfico, me gustó que vieran los mapas que ubicarán sus fincas que vieran está en la escuelita y es una zona de deslizamiento. Hay un proceso de riesgo que hay que trabajar también.</i> • <i>Hacen parte de divulgación científica porque en otra forma son datos científicos, pero también con esa apertura de pasarles información, ellos también dan otras informaciones que son muy importantes para poder trabajar en el territorio.</i> • <i>Una sola retroalimentación que yo vi como en todo el proceso, pero es en general para todos los involucrados en la metodología: Siento que hubiera sido muy chévere, entender muy, muy bien la metodología desde el principio para que cuando citábamos a los actores citáramos a más gente. Por ejemplo, cuando citamos a Andrea, que Andrea llegó allá y dijo, ahora me hubiera traído al secretario de Agricultura y de Medio Ambiente de pronto creo que sí faltó un poquito más, pero también lo entiendo porque uno entiende la metodología hasta que uno va y la implementa y ve como todo el universo de lo que uno puede llegar a hacer con la metodología.</i> 	<ul style="list-style-type: none"> • It is super aligned with what we saw last year, with what we have spoken with the entities. And the community is very receptive. • The methodology also brings awareness about what they [the community members] really need and what they must prioritize. • I also liked that part that we showed them, of the secondary data, where they saw how they see their village from the outside and why the aid arrives or does not arrive. • The methodology seemed super cool to me. That the people - I don't know if it was this specific community or if it is the [SAN] activity that has led to it - begin to recognize these factors. • Regarding geographic information systems, I liked the fact that they saw the maps of their farms and that they saw that around the school there is a landslide area. And that there is a risk process that must be worked on as well. • They [the community members] are part of scientific dissemination / scientific data, but [the methodology] also has that openness of passing on information and giving additional information that is very important to work in the territory. • There was only one piece of feedback that I saw throughout the entire process, but it is in general for everyone involved in the methodology: I feel that it would have been very cool to understand the methodology very, very well from the beginning. Consequently, at the moment of stakeholder invites, we would have invited more people. For example, when we invited Andrea [from the Apartadó Municipality], she said that she would have come with the Secretary of Agriculture and the Environment. I think that there was a little more missing, but I understand. Because one understands the methodology while marching with it, implementing it and seeing it as the entire universe of what one can do with the methodology.

SAN will attend the comment about “*understanding the methodology from the beginning*” with the step-by-step Guide on systematizing stakeholder processes.

Blueprint optimization

In comparison with the 2022 Blueprint version developed in Zona Bananera, SAN has realized several significant improvements for the Blueprint Landscape Sustainability Evaluation system, resulting from the adaptation to the selected geographic window in the Apartadó municipality, the participating cocoa smallholder communities, and the needs of the Swisscontact Paisaje +Sostenible program team.

As a result, the Blueprint toolkit is a multi-level system that accurately reflects the environmental and socio-economic reality and is composed of five evaluation levels, that together describe an accurate picture of the selected territory's sustainability as evidenced by the testimonies of the local stakeholders:

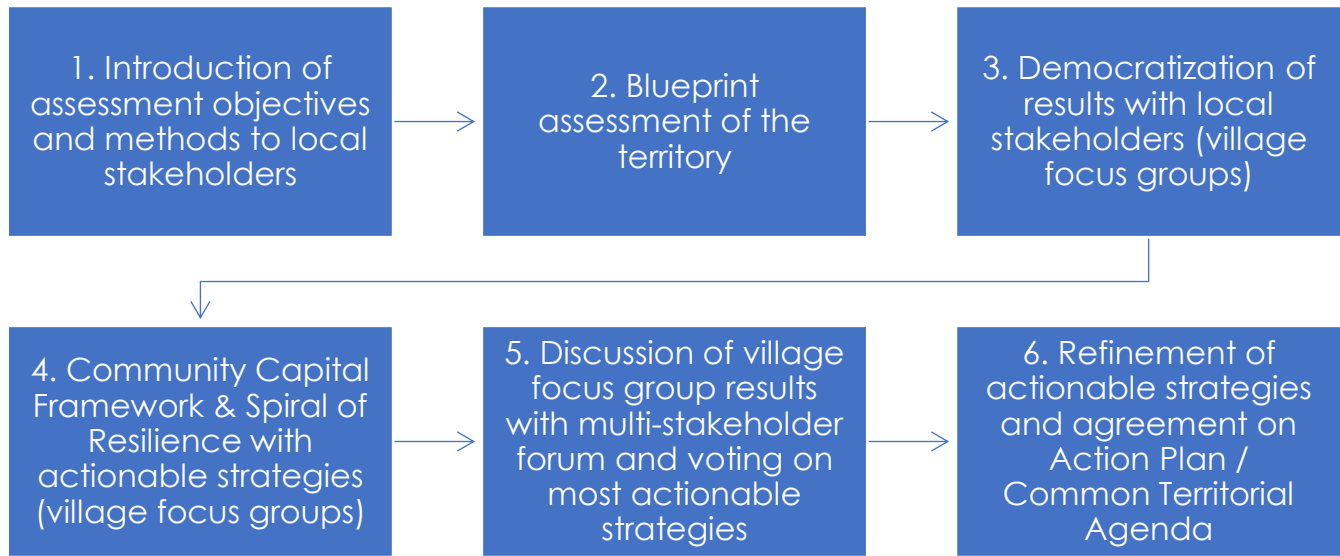


The most significant improvements include:

- Comparing land-use change in the most effective and accurate way:
 - Land use change analysis comparing two data points (in this case, comparing 2019 and 2023) based on the high-resolution images of Planet Scope provided for free by NORAD with 0.5 ha as the minimum interpretable unit for a 1:10,000 scale.
- The reduction of the number of indicators and re-classification for focus groups or individual farm visits;
- The methods for the focus groups: Flora & Flora community capital framework, and spiral towards community resilience;
- Agronomic and environmental assessment of a representative sample of cocoa smallholdings based on a dialogue with producers framed within the Cocoa Adoption Observations – adapted by SAN and Fundación Natura for Colombia. Adoption Observations for measuring realistic farming progress for cocoa smallholder production;

- The new assessment level – immersion in the territory: Landscape immersion walk to deepen the analysis of the GIS land use cover report results and reflect on land use scenarios as a connection between farm and landscape management. Exploring the landscapes while walking farms and natural ecosystems with community leaders; feel and observe the status and changes directly and discuss in-situ.

The Blueprint assessment forms part of the following steps with the final goal of the participatory definition of a Common Territorial Agenda:



Project outcomes and their indicators

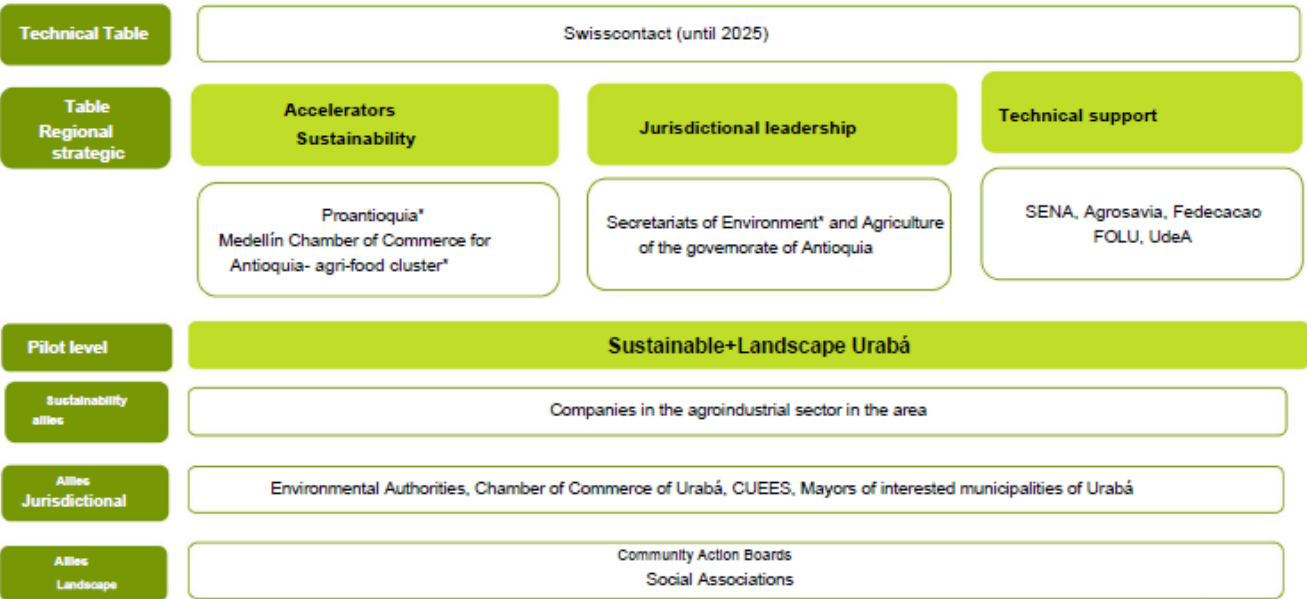
<p>[Outcome 1] Improved capacity of Swisscontact and representatives of local organizations in the use of Blueprint/CTA processes and other innovative approaches to support meaningful planning and policy advocacy on climate action.</p>	<p>[Indicator 1.1] Three project staff trained and capable of using Blueprint/CTA disaggregated by gender and age</p> <ul style="list-style-type: none"> • 2 female (66.7%) from Swisscontact: <ul style="list-style-type: none"> ◦ Angie Quintero (Monitoring and Results Measurement (MRM) Manager)) ◦ Melissa Patiño (Landscape Governance and Evaluation Facilitator) • 1 male from Equiori: <ul style="list-style-type: none"> ◦ Mario David Cardona (Field lead and team supervisor) <p>[Indicator 1.2] # baseline indicators, in total, developed for monitoring: <u>92</u> (Classified by method type, the final indicator list contains: 5 GIS indicators, 22 secondary data indicators, 15 focal group indicators and 50 indicators for farmer interviews).</p>
---	--

<p>[Outcome 2]</p> <p>Improved access to and use of information among targeted communities to prepare for and respond to opportunities in their community to strengthen landscape sustainability.</p>	<p>[Indicator 2.1]</p> <p># of stakeholders (of which 30% are female) who have participated in the Blueprint/CTA process: 95 (of which 66 or 69.5% were women).</p>
	<p>[Indicator 2.2]</p> <p># of community engagement sessions: <u>8, in total (4 per village: El Osito (4) and El Guineo (4)).</u></p> <ol style="list-style-type: none"> 1. Introduction of the project objectives and benefits for each community (December 2023); 2. Focus group with key questions about the village's situation (based on Flora & Flora 7 community capital methodology) (January 2024); 3. Democratization of the assessment results (February 2024); 4. Discussion of the Swisscontact action plan (draft Common Territorial Agenda) and most suited actionable strategies for each community (April 2024).
<p>[Outcome 3]</p> <p>Collaborative processes are used for assisting communities undertake activities that reinforce their strengths and are consistent with priorities on climate change mitigation and adaptation.</p>	<p>[Indicator 3.1]</p> <p># of actionable strategies developed by the multistakeholder forum that align with the goals and objectives of the Paisajes + Sostenibles project:</p> <ul style="list-style-type: none"> • 30 (first version based on February 2024 focus group exercises; • 25 (version agreed upon during the April 2024 multistakeholder forum (Joint construction of the Programa +Sostenible Action Plan for Uraba) led by Swisscontact)
	<p>[Indicator 3.2]</p> <p># of participants engaged in the multistakeholder forum (of which 30% are female)</p> <ul style="list-style-type: none"> • February 2024: <ul style="list-style-type: none"> - With a total participation of 9 participants (6 women (67%), 3 men) - Both outputs are the multi-stakeholder output and basis for a future Common Territorial Agenda • April 2024: <ul style="list-style-type: none"> - With a total participation of 17 participants (9 women (53%), 8 men)

Conclusions

Next steps for Swisscontact

Achieve funding to implement the action plan and establish the commonly agreed governance structure to oversee its implementation:



Blueprint and SAN's programs

The SAN secretariat will start the promotion of the Blueprint ready replication with other partners or in other regions for other crops through an Agrotalk SAN member webinar on May 22, 2024:

Blueprint landscape sustainability evaluation toolset - ready for use by SAN members: SAN, SAN member Fundación Natura, and Swisscontact have collaborated since 2020 on the development of a participatory and low-cost toolset to evaluate the sustainability of small territories (municipality or village level) in Colombia. The result is a multi-level system: 1. multi-temporal land-use analysis with high-resolution satellite images based on a visual classification with field verification, 2. The landscape immersion walk, 3. Field visits to farms/smallholders, 4. Village focus groups; and 5. Socio-economic municipality level secondary data. This combination manages to accurately reflect the reality as testified by local stakeholders and institutions. This rich information set forms the basis of local multi-stakeholder groups that design together a Common Territorial Agenda. This AgroTalk will summarize the Blueprint guidance and tool package that can be adapted to the landscape and sustainable agriculture programs of SAN members.

Publications about the project



CRIIE Urabá

April 10 at 3:29 PM · 🌐

🌱🌿🌳 Desde el CRIIE Urabá, fuimos invitados por [Swisscontact](#) Colombia, para acompañarlos en la socialización del su proyecto Paisajes Sostenibles, un evento significativo y de trabajo conjunto con las comunidades de las veredas El Osito y El Guineo, así como con diversas organizaciones del municipio de Apartadó.

El objetivo principal es construir un Paisaje + Sostenible en la subregión de Urabá. ¿Cómo? Mediante acciones concretas que mejoren los medios de subsistencia y el bienestar de las familias rurales. Se quiere además crear paisajes de abastecimiento sostenible, con cadenas de suministro libres de deforestación y respetuosas con el clima, para las generaciones presentes y futuras.

¡Como CRIIE Urabá nos hemos unido a la iniciativa, para articular acciones con las juntas de acción comunal del Osito y el Guineo (Apartadó), la Cámara de Comercio de Urabá, ASOAGRICAC, la Corporación Turística de Urabá, Caribe y el Darién, la Alcaldía de Apartadó, Sustainable Agriculture Network-SAN y el CC Plaza del Río.

#EICRIIEsUrabá #UdeA #CUEESUrabá #InnovaciónParaLosTerritorios #AlcaldíaDeApartadó

#Swisscontact #Urabá #PaisajesSostenibles





Doris Morales, productora Asogricar.
Proyecto Paisajes+Sostenibles



Colombia

“Debemos de cuidar nuestra Madre Tierra porque ella es nuestro pulmón, sin ella no existimos. Desde el cultivo de productos sanos con el apoyo de Swisscontact estamos contribuyendo al cuidado de nosotros y nuestro planeta tierra”.



Embracing Landscape Approaches: A Blueprint for Sustainable Territories

In the pursuit of achieving sustainability in any given territory, adopting landscape approaches emerges as a crucial strategy. This holistic approach transcends traditional boundaries and focuses on the interconnectedness of various elements within an ecosystem. The significance of landscape approaches with community involvement, particularly in the context of sustainable development plans, is undeniable.

There is a symbiotic relationship between landscape approaches and sustainable agriculture, with a collective potential to foster a healthy environment, strengthen rural livelihoods, and boost productivity and profitability for smallholder families.

SAN's signature program, TerraViva, utilizes a landscape approach to maximize sustainability opportunities in agricultural landscapes. [Click here to learn more.](#)

The Power of Landscape Approaches

Landscape approaches involve the integration of diverse stakeholders, including local communities, governmental bodies, NGOs, and businesses, to collaboratively design and implement sustainable development plans. By considering the entire landscape as a functional unit, these approaches break down silos, encouraging a comprehensive understanding of the intricate relationships between various elements such as ecosystems, economies, and social structures.

Importance of Community Involvement

One key pillar of successful landscape approaches is community engagement. Involving local communities in the decision-making process ensures that the development plans



SAN Awarded Grant to Advance Sustainable Landscapes in Colombia

The Sustainable Agriculture Network is thrilled to announce that it has been awarded a grant to collaborate with [Swisscontact](#) and SAN network member [Fundación Natura](#) on a groundbreaking project in Colombia. This project aims to integrate social accountability processes into the "Paisajes + Sostenibles" initiative using the latest iteration of the [Blueprint landscape assessment tools](#).

This project is possible thanks to a grant from the ISEAL Innovations Fund, which is supported by the Swiss State Secretariat for Economic Affairs SECO.

SAN's work will not only involve applying these tools but also using participatory action research methods and democratization of data to construct a Common Territorial Agenda (CTA) with local stakeholders. The overarching goal is to promote deforestation-free and climate-friendly supply chains in Colombia's cocoa-dominated Apartadó Municipality within the Antioquia Department.



Map of Colombia

Consider supporting our global efforts in advancing sustainable and regenerative agriculture.

Donate to SAN